



**WAARDENBURG**  
MEDICAL

**HAEBERLE**

mobile workstations

**Type list** valid from 1 July 2019

# robust and striking

equipment cart system  
heavy duty



**toro**  
by HAEBERLE

toro

## - the robust and striking equipment cart system

---

**toro** - the robust design of the modular cart system is what really makes it stand out from the crowd; the system combines striking design with especially high stability. Its high capacity allows toro to meet the highest demands as a mobile carrier system for large device combinations.

The toro carts in widths of 45 and 63 cm and with decorative accents in grey or blue can be adapted to suit all application fields and complemented with corresponding system components and accessories for the most diverse of applications. The toro system can also be configured to meet your personal requirements if you so wish.



**Features:** Chic, stable chassis, spacious 2-pillar aluminium carrier unit with integrated cable duct for perfect cable management and for mounting socket boards and accessories. Sturdy, hygienic metal shelves with rounded decorative corners, smooth drawers with self-closing feature including practical handle with a label window and convenient corner push handles.

**Function:** As basic cart, equipment cart, ergometry cart, endoscopy cart, emergency cart, computer cart ...and more.

**Application:** In clinics, rehabilitation centres and doctors' practices.

**Note:** For safety's sake some selected equipment carts are equipped with a POAG pin now.



### POAG equipotential bonding system conforming to DIN 42801

In rooms used for medical purposes, equipment and other conductive parts may have different potentials, which poses a risk to persons. Equipotential bonding offers safe protection.

From now on, a POAG pin will be mounted on selected equipment carts at the factory, and undergo electrical testing as part of final acceptance. If your rooms do not already have one, please order the correct equipotential bonding cable as well. Our team would be happy to advise you.

In the toro equipment cart system, a POAG pin (Ref. No. 19529) is mounted on the rear of the base plate. Retro-fitting on the rail by the customer is possible, but must be carried out by qualified personnel.

## Components

- Extremely strong chassis with high-quality, easy-run castors. The front 2 castors are lockable. Electrically conductive castors are deliverable on request.
- Precious 2-pillar aluminium carrier profiles with cover and integrated cable duct for optimal cable management and multiple socket outlet. With 32 mm grid of mounting system parts.
- Grey or blue decorative strips.
- Strong, hygienic metal shelves with rounded grey decorative corners.
- Well-formed drawers with soft self-closing feature and practical grey handle with label window.
- Striking grey angular push handles. 2 or 4 push handles can be mounted at the cart.
- Cable duct horizontal arm with integrated cable guide for the horizontal laying of up to 6 cables or for a multiple socket outlet.
- Pull-out shelf with grey decorative angulars and handle for setting up equipment or keyboard.
- Rail for shelf for securing equipment when moving the cart.

## Technical details / dimensions

Cart outer dimensions:	with shelf width 450 mm 701 x 648 x 876 mm (w x d x h) 701 x 648 x 1260 mm (w x d x h) 701 x 648 x 1516 mm (w x d x h)
	with shelf width 630 mm 880 x 648 x 876 mm (w x d x h) 880 x 648 x 1260 mm (w x d x h) 880 x 648 x 1516 mm (w x d x h)
Maximum load:	up to 130 kg (castors Ø 125 mm) up to 250 kg (castors Ø 150 mm)
Carrier profiles height:	668 / 1052 / 1308 mm standard
Shelf outer dimensions:	450 x 485 x 30 mm (w x d x h) 630 x 485 x 30 mm (w x d x h)
Shelf load limit:	up to 50 kg per shelf
Pull-out shelves outer dimensions:	450 x 485 x 30 mm (w x d x h) 630 x 485 x 30 mm (w x d x h)
Pull-out shelf load limit:	up to 10 kg
Drawer outer dimensions:	450 x 487 x 125/250 mm (w x d x h) 630 x 487 x 125/250 mm (w x d x h)
Drawer surface load:	up to 10 kg
Quality light running castors:	4 castors Ø 125 mm with wall guards as standard. 2 castors are lockable. Castors Ø 150 mm for an extra charge.

## Materials / colours

Carrier profiles:	Anodized aluminium
Cover cap:	ABS plastic, grey (6502B acc. NCS)
Chassis:	Cast aluminium, finely textured, powder-coated, grey (RAL 7012)
Decorative strip colours:	Made of PVC, grey (6502B acc. NCS) or blue (3502B acc. NCS)
Decorative angulars:	ABS plastic, grey (6502B acc. NCS)
Shelves:	Powder-coated steel, grey-white (RAL 9002)
Rail for shelves:	Powder-coated tubular steel, white-aluminium (RAL 9006)
Push handle:	Polyamide, grey (6502B acc. NCS)
Drawer handle:	ABS plastic, grey (6502B acc. NCS) with label window
Drawer:	Powder-coated steel housing, grey-white (RAL 9002) Powder-coated aluminium front panel, grey-white (RAL 9002)

Carts 45  $\hat{=}$  Shelf width 450 mm / Carts 63  $\hat{=}$  Shelf width 630 mm

All toro carts are equipped with chassis, 4 castors  $\varnothing$  125 mm, 2 brakes and wall guards in series. Carts with drawers include grey drawer handles with label window. **Angular push handles are extra. Please order separately.** The carts shown on the following pages are delivered assembled without surcharge.

## Basic cart / Equipment carts

### toro basic cart



with 2 shelves, 1 drawer and 1 drawer handle. Up to 4 drawers can be retrofitted.

#### Cart 45 with POAG-Pin

Dim.: 701 x 648 x 876 mm (w x d x h)

Decorative strips	Ref. no.
grey	20271
blue	20272
2 angular push handles, grey	20193

#### Cart 63 with POAG-Pin

Dim.: 880 x 648 x 876 mm (w x d x h)

Decorative strips	Ref. no.
grey	20481
blue	20482
2 angular push handles, grey	20193

Single drawers see on page 10.

### toro equipment cart 1



with 3 shelves, 1 drawer, 1 drawer handle, 1 cable duct horizontal arm for the optimal management of up to 6 cables.

#### Cart 45 with POAG-Pin

Dim.: 701 x 648 x 1260 mm (w x d x h)

Decorative strips	Ref. no.
grey	20781
blue	20782
2 angular push handles, grey	20193

#### Cart 63 with POAG-Pin

Dim.: 880 x 648 x 1260 mm (w x d x h)

Decorative strips	Ref. no.
grey	20791
blue	20792
2 angular push handles, grey	20193

### toro equipment cart 2



with 4 shelves, 1 drawer, 1 drawer handle, 1 cable duct horizontal arm for the optimal management of up to 6 cables.

#### Cart 45 with POAG-Pin

Dim.: 701 x 648 x 1260 mm (w x d x h)

Decorative strips	Ref. no.
grey	20281
blue	20282
2 angular push handles, grey	20193

#### Cart 63 with POAG-Pin

Dim.: 880 x 648 x 1260 mm (w x d x h)

Decorative strips	Ref. no.
grey	20491
blue	20492
2 angular push handles, grey	20193

# Computer carts

## toro computer cart 1



with 2 shelves, 1 pull-out shelf for keyboard with extensible mousepad and handle, 1 drawer handle, 1 horizontal arm with TFT mount, 1 PC support for mounting on right or left side. Please specify right or left when ordering!

### Cart 45 with POAG-Pin

Dim.: 701 x 648 x 1260 mm (w x d x h)

Decorative strips	Ref. no.
grey	20611
blue	20612
2 angular push handles, grey	20193

### Cart 63 with POAG-Pin

Dim.: 880 x 648 x 1260 mm (w x d x h)

Decorative strips	Ref. no.
grey	20751
blue	20752
2 angular push handles, grey	20193

## toro computer cart 2



with 2 shelves, 1 pull-out shelf for keyboard with extensible mousepad and handle, 1 drawer handle, 1 cable duct horizontal arm at rear under the upper shelf.

### Cart 45 with POAG-Pin

Dim.: 701 x 648 x 876 mm (w x d x h)

Decorative strips	Ref. no.
grey	20621
blue	20622
2 angular push handles, grey	20193

### Cart 63 with POAG-Pin

Dim.: 880 x 648 x 876 mm (w x d x h)

Decorative strips	Ref. no.
grey	20571
blue	20572
2 angular push handles, grey	20193

## toro computer cart 3



with 2 shelves, 1 pull-out shelf for keyboard with extensible mousepad and handle, 1 drawer handle, 1 cable duct horizontal arm, 1 horizontal arm with "alegro" monitor holder (load capacity up to 12 kg).

### Cart 45 with POAG-Pin

Dim.: 701 x 648 x 876 mm (w x d x h)

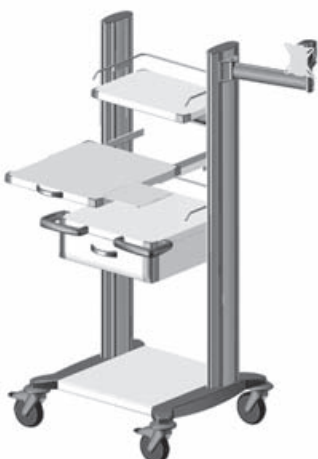
Decorative strips	Ref. no.
grey	20801
blue	20802
2 angular push handles, grey	20193

### Cart 63 with POAG-Pin

Dim.: 880 x 648 x 876 mm (w x d x h)

Decorative strips	Ref. no.
grey	20811
blue	20812
2 angular push handles, grey	20193

## toro computer cart 4



with 2 shelves 485 mm deep, 1 shelf 300 mm deep, 1 pull-out shelf for keyboard with extensible mousepad and handle, 1 drawer, 1 drawer handle, 2 rails for shelves, 1 cable duct horizontal arm, 1 "alegro" monitor holder on articulated arm with integrated cable guide (load capacity up to 12 kg).

### Cart 45 with POAG-Pin

Dim.: 701 x 648 x 1516 mm (w x d x h)

Decorative strips	Ref. no.
grey	20821
blue	20822
2 angular push handles, grey	20193

### Cart 63 with POAG-Pin

Dim.: 880 x 648 x 1516 mm (w x d x h)

Decorative strips	Ref. no.
grey	20831
blue	20832
2 angular push handles, grey	20193

# Tablet/iPad equipment cart / Ergometry cart / Emergency cart / Anaesthesia cart

## toro tablet/iPad equipment cart 1



with 3 shelves, 1 drawer, 1 drawer handle, 1 cable duct horizontal arm between the carrier profiles, 1 mount for tablet/iPad (ref. no. 20847).

### Cart 45 with POAG-Pin

Dim.: 701 x 648 x 1260 mm (w x d x h)

Decorative strips	Ref. no.
grey	20261
blue	20262
2 angular push handles, grey	20193

### Cart 63 with POAG-Pin

Dim.: 880 x 648 x 1260 mm (w x d x h)

Decorative strips	Ref. no.
grey	20631
blue	20632
2 angular push handles, grey	20193

## toro ergometry cart



with 2 shelves (485 mm deep), 1 shelf (300 mm deep), 1 drawer, 1 drawer handle, 1 cable holder with fastening clamp.

### Cart 45 with POAG-Pin

Dim.: 701 x 648 x 1516 mm (w x d x h)

Decorative strips	Ref. no.
grey	20371
blue	20372
2 angular push handles, grey	20193

### Cart 63 with POAG-Pin

Dim.: 880 x 648 x 1516 mm (w x d x h)

Decorative strips	Ref. no.
grey	20501
blue	20502
2 angular push handles, grey	20193

## toro emergency cart



with 2 shelves (485 mm deep), 1 shelf (300 mm deep) with anti-slide mat, 3 drawers, 3 drawer handles.

### Cart 45 with POAG-Pin

Dim.: 701 x 648 x 1260 mm (w x d x h)

Decorative strips	Ref. no.
grey	20591
blue	20592
2 angular push handles, grey	20193
reanimation board	17370

### Cart 63 with POAG-Pin

Dim.: 880 x 648 x 1260 mm (w x d x h)

Decorative strips	Ref. no.
grey	20731
blue	20732
2 angular push handles, grey	20193
reanimation board	17370

## toro anaesthesia cart



with 1 shelf, 5 drawers (125 mm high), 5 drawer handles.

### Cart 45 with POAG-Pin

Dim.: 701 x 648 x 876 mm (w x d x h)

Decorative strips	Ref. no.
grey	20601
blue	20602
2 angular push handles, grey	20193

### Cart 63 with POAG-Pin

Dim.: 880 x 648 x 876 mm (w x d x h)

Decorative strips	Ref. no.
grey	20741
blue	20742
2 angular push handles, grey	20193

# Endoscopy carts

## toro endoscopy cart 1



with 5 shelves, 1 drawer, 1 drawer handle, 1 cable duct horizontal arm for the optimal integration of up to 6 cables.

### Cart 45 with POAG-Pin

Dim.: 701 x 648 x 1516 mm (w x d x h)

Decorative strips	Ref. no.
grey	20291
blue	20292
2 angular push handles, grey	20193

### Cart 63 with POAG-Pin

Dim.: 880 x 648 x 1516 mm (w x d x h)

Decorative strips	Ref. no.
grey	20511
blue	20512
2 angular push handles, grey	20193

## toro endoscopy cart 2



with 4 shelves, 1 pull-out shelf for keyboard with extensible mousepad and handle, 1 drawer, 1 drawer handle, 1 cable duct horizontal arm for the optimal integration of up to 6 cables, 1 universal endoscope holder.

### Cart 45 with POAG-Pin

Dim.: 701 x 648 x 1516 mm (w x d x h)

Decorative strips	Ref. no.
grey	20581
blue	20582
2 angular push handles, grey	20193

### Cart 63 with POAG-Pin

Dim.: 880 x 648 x 1516 mm (w x d x h)

Decorative strips	Ref. no.
grey	20561
blue	20562
2 angular push handles, grey	20193

## toro endoscopy cart 3



with 3 shelves, 1 pull-out shelf for keyboard with extensible mousepad and handle, 1 rail for shelf, 1 drawer, 1 drawer handle, 1 cable duct horizontal arm for the optimal integration of up to 6 cables, 1 horizontal arm with "alegro" monitor holder (load capacity up to 12 kg), 1 universal endoscope holder, 1 standard profile rail, 1 multiple socket outlet (standard).

### Cart 45 with POAG-Pin

Dim.: 701 x 648 x 1516 mm (w x d x h)

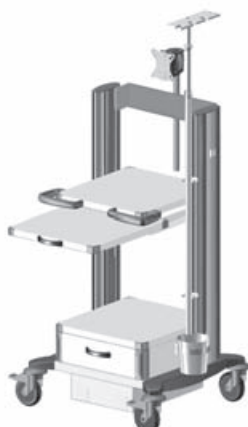
Decorative strips	Ref. no.
grey	20841
blue	20842
2 angular push handles, grey	20193

### Cart 63 with POAG-Pin

Dim.: 880 x 648 x 1516 mm (w x d x h)

Decorative strips	Ref. no.
grey	20851
blue	20852
2 angular push handles, grey	20193

## toro endoscopy cart 4



with 2 shelves, 1 pull-out shelf for keyboard with extensible mousepad and handle, 1 standard profile rail at the left carrier section, 1 drawer, 1 drawer handle, 1 horizontal arm with "alegro" monitor holder (load capacity up to 12 kg), 1 universal endoscope holder with collecting vessel and attachment 1 isolating transformer, undermounted on the chassis, 1 IEC 320 type C14 multiple 1000 VA socket with 6 outlets, 1 central on/off switch, laterally on the right side of the carrier profile.

### Cart 45 with POAG-Pin

Dim.: 701 x 648 x 1260 mm (w x d x h)

Decorative strips	Ref. no.
grey	20861
blue	20862
2 angular push handles, grey	20193

### Cart 63 with POAG-Pin

Dim.: 880 x 648 x 1260 mm (w x d x h)

Decorative strips	Ref. no.
grey	20871
blue	20872
2 angular push handles, grey	20193



# System parts

## Chassis / Carrier profiles / Castors

### Chassis toro



with basic shelf, 4 quality easy-run castors (Ø 125 mm) with wall guards (2 castors lockable).

for **cart 45**

Dim.: 701 x 648 x 203 mm (w x d x h)

Chassis	Ref. no.
Castors Ø 125 mm	20051

for **cart 63**

Dim.: 880 x 648 x 203 mm (w x d x h)

Chassis	Ref. no.
Castors Ø 125 mm	20086

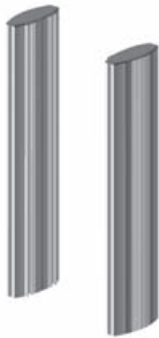
Dim.: 701 x 648 x 232 mm (w x d x h)

Chassis	Ref. no.
Castors Ø 150 mm electrically conductive	20143

Dim.: 880 x 648 x 232 mm (w x d x h)

Chassis	Ref. no.
Castors Ø 150 mm electrically conductive	20087

### Carrier profiles standard heights



1 pair made of anodized aluminium with cover cap, integrated cable duct and decorative strips in grey or blue.

**height of profile: 668 mm**

Decorative strips	Ref. no.
grey	20121
blue	20122

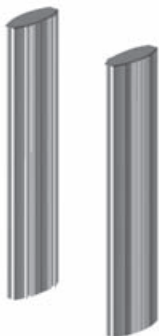
**height of profile: 1052 mm**

Decorative strips	Ref. no.
grey	20131
blue	20132

**height of profile: 1308 mm**

Decorative strips	Ref. no.
grey	20141
blue	20142

### Carrier profiles in individual heights



1 pair made of anodized aluminium with cover cap, integrated cable duct and decorative strips in grey or blue.

height \ colours	Decorative strips grey	Decorative strips blue
0 - 636 mm	20331	20332
700 - 1020 mm	20341	20342
1084 - 1266 mm	20351	20352
1340 - 1820 mm	20361	20362

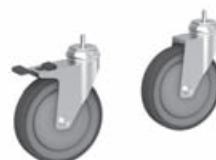
### Castors, Ø 125 mm electrically conductive



Quality light running castors, load up to 130 kg. Extra charge for 4 castors, (2 castors are lockable).

Ref. no.
18064

### Castors, Ø 150 mm electrically conductive



Quality light running castors, load up to 250 kg. Extra charge for 4 castors, (2 castors are lockable).

Ref. no.
20058



## Handles / Shelves / Lateral shelf / Pull-out shelves

### Angular push handle



1 piece, grey, elegant and practical, made of polyamide plastic.

**Ref. no.**

20191

**Drawer handle** 1 piece, grey, with label window, made of ABS plastic.



**Ref. no.**

20061

### Shelf



485 mm deep, made of powder-coated steel, grey-white (RAL 9002) with grey decorative corners.

for **cart 45**

Dim.: 450 x 485 x 30 mm (w x d x h)

**Ref. no.**

20161

for **cart 63**

Dim.: 630 x 485 x 30 mm (w x d x h)

**Ref. no.**

20441

### Shelf with contoured edge



485 mm deep, made of stainless steel in insensitive, elegant linen texture, with grey decorative corners. Storage space dim.: 600 x 460 x 30 mm (w x d), contoured edge 7 mm high.

for **cart 63**

Dim.: 630 x 485 x 30 mm (w x d x h)

**Ref. no.**

20442

### Shelf



300 mm deep, made of powder-coated steel, grey-white (RAL 9002) with grey decorative corners.

for **cart 45**

Dim.: 450 x 300 x 30 mm (w x d x h)

**Ref. no.**

20101

for **cart 63**

Dim.: 630 x 300 x 30 mm (w x d x h)

**Ref. no.**

20035

### Lateral shelf



fastenable on the side of the carrier profiles, made of steel, powder-coated, grey-white (RAL 9002), load capacity up to 15 kg.

for **cart 45**

Dim.: 400 x 400 x 60 mm (w x d x h)

**Ref. no.**

20167

for **cart 63**

Dim.: 400 x 400 x 60 mm (w x d x h)

**Ref. no.**

20167

### Pull-out shelf



made of powder-coated steel, grey-white (RAL 9002), telescopic rail with grey decorative corners, grey handle with label window. Pull-out length 300 mm.

for **cart 45**

Dim.: 450 x 485 x 30 mm (w x d x h)

**Ref. no.**

20081

for **cart 63**

Dim.: 630 x 485 x 30 mm (w x d x h)

**Ref. no.**

20100

### Pull-out shelf for keyboard



made of powder-coated steel, grey-white (RAL 9002) with extensible mousepad, telescopic rail with grey decorative corners, grey handle with label window. Pull-out length 300 mm.

for **cart 45**

Dim.: 450 x 485 x 30 mm (w x d x h)

**Ref. no.**

20228

for **cart 63**

Dim.: 630 x 485 x 30 mm (w x d x h)

**Ref. no.**

20095

## Anti-slide mats / Gallery frame / Rail / Drawers

### Anti-slide mat for shelves

made of ethylene vinyl acetate copolymer (EVA), transparent, noise-damming.

for **cart 45**

Dim.: 450 x 300 mm (B x T)

**Ref. no.**

16161

for **cart 63**

Dim.: 630 x 300 mm (B x T)

**Ref. no.**

17647

Dim.: 450 x 450 mm (B x T)

**Ref. no.**

15541

Dim.: 630 x 450 mm (B x T)

**Ref. no.**

17743

### Gallery frame



made of stainless steel, polished. A coated plate is required beneath the gallery. Assembly ex works.

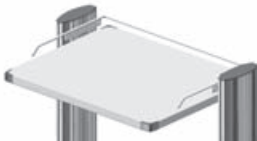
for **cart 63**

Dim.: 631 x 485 x 100 mm (w x d x h)

**Ref. no.**

20186

### Rail, short version



for shelf, made of powder-coated tubular steel, white-aluminium (RAL 9006).

for **cart 45**

Dim.: 450 x 295 x 63 mm (w x d x h)

**Ref. no.**

20073

for **cart 63**

Dim.: 630 x 295 x 63 mm (w x d x h)

**Ref. no.**

20089

### Rail, long version

Dim.: 450 x 485 x 63 mm (w x d x h)

**Ref. no.**

20875

Dim.: 630 x 485 x 63 mm (w x d x h)

**Ref. no.**

20873

### Drawer 125



steel housing, aluminium front panel, powder-coated, grey-white (RAL 9002), drawer guide with soft-closing feature, 1 grey handle with label window and grey decorative angulars. Drawer surface load up to 10 kg.

for **cart 45**

External dim.:  
450 x 487 x 125 mm (w x d x h)

Inner dim.:  
356 x 450 x 72 mm (w x d x h)

**Ref. no.**

20181

for **cart 63**

External dim.:  
630 x 487 x 125 mm (w x d x h)

Inner dim.:  
506 x 450 x 72 mm (w x d x h)

**Ref. no.**

20451

### Drawer 250



External dim.:  
450 x 487 x 250 mm (w x d x h)

Inner dim.:  
356 x 450 x 180 mm (w x d x h)

**Ref. no.**

20403

External dim.:  
630 x 487 x 250 mm (w x d x h)

Inner dim.:  
506 x 450 x 180 mm (w x d x h)

**Ref. no.**

20404

Lock / Anti-tamper seal / Drawer insets / Back cover / Cable duct horizontal arms

**Lock**

**Surcharge** for lockable drawer. Central locking on request.

**Anti-tamper seal**

made of steel, power-coated, grey-white (RAL 9002). For up to 3 drawers. (without seals).

Dim.: 57 x 95 x 260 mm (w x d x h)



Ref. no.
20099

Ref. no.
13958

**Drawer inset**

with variable partitions and flexible dividers. Made of transparent synthetic material, removable and suitable for cleaning in the dishwasher.



**for cart 45**

with 1 lengthways divider and 4 crossways dividers

Ref. no.
16722

**for cart 63**

with 2 lengthways dividers and 6 crossways dividers

Ref. no.
16721

**Back cover "comfort"**

powder-coated steel, grey-white (RAL 9002). To cover electrical components, such as multiple socket outlets and cables.

**at carrier profiles 1052 mm high,**

**for cart 45**

Dim.: 488 x 105 x 1052 mm (w x d x h)

Ref. no.
20520

**for cart 63**

Dim.: 668 x 105 x 1052 mm (w x d x h)

Ref. no.
20580



**at carrier profiles 1308 mm high,**

**for cart 45**

Dim.: 528 x 105 x 1308 mm (w x d x h)

Ref. no.
20560

**for cart 63**

Dim.: 711 x 105 x 1308 mm (w x d x h)

Ref. no.
20570

**Cable duct horizontal arm**

between the carrier profiles, with movable holders for the optimal integration of up to 6 cables. With grey profile cover.



**for cart 45**

Dim.: 450 x 30 x 75 mm (w x d x h)

Ref. no.
20119

**for cart 63**

Dim.: 630 x 30 x 75 mm (w x d x h)

Ref. no.
20136

## Horizontal arms / Cross member / Mount for tablet/iPad / Brackets for pipes

### Horizontal arm with TFT mount



for flat-screens (VESA 75/100).

for **cart 45**

Dim.: 450 x 20 x 100 mm (w x d x h)

Ref. no.

20097

for **cart 63**

Dim.: 630 x 20 x 100 mm (w x d x h)

Ref. no.

20155

### Horizontal arm with "alegro" monitor holder



on height-adjustable rod for flat-screens (VESA 75/100). Load capacity up to 12 kg.

for **cart 45**

Dim.: 450 x 20 x 100 mm (w x d x h)

Ref. no.

20148

for **cart 63**

Dim.: 630 x 20 x 100 mm (w x d x h)

Ref. no.

20088

### Cross member



at the top of the carrier profiles for holding various accessories. Steel, powder-coated, grey-white (RAL 9002). Load up to 10 kg.

for **cart 45**

Dim.: 571 x 158 x 6 mm (w x d x h)

Ref. no.

20888

for **cart 63**

Dim.: 750 x 158 x 6 mm (w x d x h)

Ref. no.

20887

### Mount for tablet/iPad on cross member

new



Cross member made of powder-coated steel, grey-white (RAL 9002) with mount for tablet/iPad. Anodised aluminium, adjustable from 7" to 10" Horizontally and vertically rotatable and tiltable, with theft protection.

for **cart 45**

Dim.: 571 x 158 x 332 mm (w x d x h)

Ref. no.

20845

for **cart 63**

Dim.: 750 x 158 x 332 mm (w x d x h)

Ref. no.

20846

### Brackets for pipes



for holding the "alegro" monitor holder, TFT mount, a lamp or cable and hose holder. Suitable for cross member on **cart 45 and 63**.

Dim.: 70 x 50 x 74 mm (w x d x h)

for "alegro" monitor holder (pipe Ø 25 mm)

Ref. no.

20889

Ref. no.

20890

for TFT mount (tube Ø 22 mm)



Dim.: 70 x 50 x 47 mm (w x d x h)

for a lamp or cable and hose holder (pipe Ø 16 mm)

Ref. no.

20891

## "alegro" monitor carrier system - different variants

For stepless and precise fixation without any physical exertion. Horizontally and vertically rotatable, tilting and swivelling function. Monitor adaption VESA 75/100.

### "alegro" monitor holder



on tightly adjusted rod in the carrier profile.  
(Height approx. 400 mm above the profile)

Load capacity up to 12 kg

**Ref. no.**

25010

Load capacity up to 18 kg

**Ref. no.**

25034

### "alegro" holder for double monitoring



on aluminium-traverse (w 630 mm) between two carrier profiles for simple, synchronous positioning of 2 monitors.  
Cable duct inside the profiles.

for **Cart 63**

Load capacity up to 2 x 12 kg

**Ref. no.**

25067

Load capacity up to 2 x 18 kg

**Ref. no.**

25068

### "alegro" monitor holder



on aluminium-traverse between two carrier profiles.  
for **cart 45**

Load capacity up to 12 kg

**Ref. no.**

25060

Load capacity up to 18 kg

**Ref. no.**

25061

for **cart 63**

Load capacity up to 12 kg

**Ref. no.**

25082

Load capacity up to 18 kg

**Ref. no.**

25083

### "alegro" monitor holder on swivel arm



with 1 hinge joint and integrated cable duct.  
Reach 300 mm.

Load capacity up to 12 kg

**Ref. no.**

25025

Load capacity up to 18 kg

**Ref. no.**

25051

### "alegro" monitor holder on swivel arm



with 2 hinge joints and integrated cable duct.  
Reach 300 mm.

Load capacity up to 12 kg

**Ref. no.**

25021

Load capacity up to 18 kg

**Ref. no.**

25047

### "alegro" monitor holder on articulated arm



with adapter angle outside or inside of the carrier profile and integrated cable duct.  
Reach 300 mm.

Load capacity up to 12 kg

**Ref. no.**

25011

Load capacity up to 18 kg

**Ref. no.**

25037

### "alegro" monitor holder on double articulated arm



with adapter angle outside or inside of the carrier profile and integrated cable duct.  
Reach 2 x 150 mm.

Load capacity up to 12 kg

**Ref. no.**

25012

Load capacity up to 18 kg

**Ref. no.**

25038

## Accessories

PC support / Wire basket / Swivelling arm / TFT mount / Mount for tablet/iPad / Infusion bottle holder / Universal endoscope holder / Cable and hose holders

### PC support



with holder, (RAL 9006) above/below and fixing strap. For fastening inside or outside on the carrier profile. Please specify the mounting side, on the right or left, when ordering.

**Ref. no.**

20040

### Wire basket



to be mounted at the side of the carrier profile, steel, powder-coated, white-aluminium (RAL 9006).

Dim.:

377 x 196 x 115 mm (w x d x h)

**Ref. no.**

20150

### Swivelling arm with TFT mount



for flat-screens (VESA 75/100) to arm with bracket. Rotatable and tilting with swivelling arm (range 300 mm), white-aluminium (RAL 9006). Load capacity up to 12 kg.

**Ref. no.**

20533

### TFT mount



for flat screens (VESA 75/100), attached to a height-adjustable rod, steel, powder-coated, white-aluminium (RAL 9006). Load capacity up to 15 kg.

**Ref. no.**

20113

### Mount for tablet/iPad



for fastening to the side of the carrier profile (at front or at rear). Anodised aluminium, adjustable from 7" to 10". Horizontally and vertically rotatable and tiltable, with theft protection.

**Ref. no.**

20847

### Infusion bottle holder



for single-handed operation, chrome-plated with 4 hooks, Ø 25 mm.

**Ref. no.**

20197

### Universal endoscope holder



made of plexiglass with several openings, height-adjustable rod, for single-handed operation.

**Ref. no.**

20196

Endoscope tube of plexiglass, open at the bottom, 120 cm long, inside Ø 3,2 cm, outside Ø 4 cm, with holding clips.

**Ref. no.**

13977

As above, closed at the bottom for disinfectant solution.

**Ref. no.**

13978

### Cable and hose holder



with 2 joints, silvergry aluminium including assembly clamp. Reach approx. 950 mm.

**Ref. no.**

13926

### Cable and hose holder with flex-shaft



with 2 joints, silvergry aluminium flexible shaft chrome plated, including assembly clamp. Reach approx. 1100 mm.

**Ref. no.**

16651

Reanimation board / Standard profile rail / Waste collectors / Soap and disinfectant dispenser / Drip tray

**Reanimation board with holder**



blue, made of sturdy polyethylene, 2 kg lightweight supports up to 150 kg. Holder made of stainless steel. Suitable for trolleys with minimum 380 mm high rear walls.

Dim.:  
600 x 420 x 60 mm (w x d x h)

**Ref. no.**  
17370

**Standard profile rail**



made of stainless steel, with 2 securing points for lateral fastening. Length 420 mm.

**Ref. no.**  
20080

**Waste collector "tango"**



with practical knee operated opening system, body in ABS plastic, white (RAL 9016), fixing material included. Please order 2 standard profile rails, (ref. no. 20080), for fastening to the cart.

**Capacity 8 litres**

Dim.:  
220 x 220 x 360 mm (w x d x h)

**Ref. no.**  
20084

**Capacity 20 litres**

Dim.:  
350 x 250 x 520 mm (w x d x h)

**Ref. no.**  
20085

**Waste collector "tomo"**



made of smooth and easy to clean plastic (100% polypropylene), grey (RAL 7045), with detachable, well closing lid and with mount. Capacity of 10 litres (for disposable bags approx. w 450 x h 350 mm).

Dim.:  
315 x 180 x 315 mm (w x d x h)

**for toro**

**Ref. no.**  
20340

**for standard profile rail**

**Ref. no.**  
14066

**Soap and disinfectant dispenser**



made of naturally anodised aluminium, for standard bottles of 1 litre, with fixing material.

Dim.:  
95 x 185 x 290 mm (w x d x h)

**Ref. no.**  
20200

**Sensor dispenser**



with hygienic sensor technology for the contact-free withdrawal of liquid soap and disinfectants. For standard bottles of 1 litre. Made of naturally anodized aluminium with fixing material.

Dim.:  
95 x 210 x 290 mm (w x d x h)

**Ref. no.**  
20248

**Drip tray**

separately, removable, to clip on the dispenser (ref. no. 20200).

**Ref. no.**  
16256

**Drip tray**

separately, removable, to clip on the sensor dispenser (ref. no. 20248).

**Ref. no.**  
16256



Waste containers / Organisation systems / Injection set / KOMBI set / Disposal boxes

**Waste container for instruments**



with polypropylene bowl, can be sterilized up to 134° C, white, with mount.

Dim.:  
300 x 230 x 130 mm (w x d x h)

**with slit lid**

**Ref. no.**

13912

**without slit lid**

**Ref. no.**

13960

**Waste container**



with s/s bowl, Ø 320 mm and attachment device for the profile.

**Ref. no.**

13911

**Organisation system**



for **cart 63**

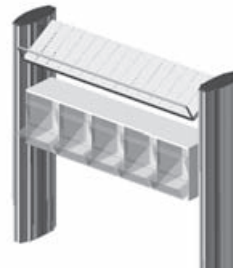
with 2 special steel tilted deposit levels, stainless steel and 10 moveable clips for conventional material packages.

Dim. of the tilted deposit levels:  
630 x 150 x 65 mm (w x d x h)

**Ref. no.**

20149

**Organisation system with "PicBox"**



for **cart 63**

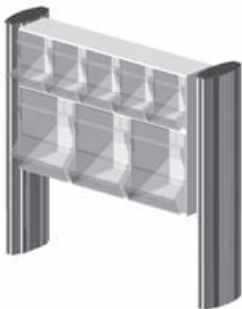
consisting of the "PicBox" canula dispenser with 5 small boxes and 1 special tilted deposit level, stainless steel and 5 moveable clips.

Dim. of the canula dispenser:  
600 x 175 x 165 mm (w x d x h)

**Ref. no.**

20118

**Injection set "PicBox"**



for **cart 63**

The dispenser with **first-in/first-out guarantee** in accordance with DIN 58953. The boxes are replenished from the top, the material is taken from below. Grey-white plastic casing with transparent acrylic glass boxes. Each box with a separate covering lid. Consisting of syringe dispenser (3 boxes) and canula dispenser (5 boxes).

Dim.:  
600 x 220 x 410 mm (w x d x h)

**Ref. no.**

20090

**KOMBI set**



Recommended for taking blood samples and giving injections. Consisting of "TAKEFIX" swab dispenser, "TIPPFIX" swab moisturiser and additional container. All parts are made of unbreakable plastic, grey-white.

Dim.:  
120 x 225 x 270 mm (w x d x h)

**Ref. no.**

13916

**Disposal boxes "Medi-Müll" à 1.5 ltrs.**



made of sunshine yellow polypropylene with HAEBERLE-green lid. Offers 3 practical ways for the disposal of all types of canulas and vacuum containers. Ideally suited for scalpels, pipettes, broken glass, swabs etc.

Height 152 mm, Ø Lid 143 mm, Ø base 108 mm

**Set à 20 boxes** and mounting.

**Ref. no.**

20190

**Carton à 100 boxes**, without mounting.

**Ref. no.**

16653

**Holder**



separately for "Medi-Müll"

**Ref. no.**

20232

## Container for canulas / Ampoule opener / Holders / Holders for dispenser boxes / Catheter container / Arm support

### Container for canulas "Schluckfix"



Disposable container for approx. 500 used canulas, made of black recycled plastic. Bulk discounts on request.

Dim.:  
55 x 100 x 170 mm (w x d x h)

Set with 20 boxes and holder.

Ref. no.

20170

### Ampoule opener "CUPFIX"



with grey-white plastic casing. Receptacle for used ampoules, removable. Diamond file is spring-loaded in a stainless steel casing.

Dim.:  
70 x 150 x 180 mm (w x d x h)

Ref. no.

20210

Original carton with 100 boxes, without holder

Ref. no.

09490

### Spare diamond file

for "CUPFIX" ampoule opener

Ref. no.

04663

### Holder

separately for "Schluckfix"

Ref. no.

20180

### Holder

separately for "CUPFIX"

Ref. no.

20233

### Holder for dispenser boxes



made of stainless steel, brushed. Suitable for common dispenser boxes of disposable gloves or tissues, incl. mounting material for **toro**.

**Holder 1-fold** (for 1 box)  
Inner dim.: 142 x 94 x 250 mm (w x d x h)

Ref. no.

20297

**Holder 3-fold** (for 3 boxes)  
Inner dim.: 253 x 94 x 394 mm (w x d x h)

Ref. no.

20298

**Holder 4-fold** (for 4 boxes)  
Inner dim.: 253 x 94 x 525 mm (w x d x h)

Ref. no.

05072

### Holder for 3 dispenser boxes



**transverse-version**, made of stainless steel, polished. Suitable for common dispenser boxes of disposable gloves or tissues. Mountable between 2 **toro** carrier profiles.

for **cart 63**

External dim.: 700 x 152 x 144 mm (w x d x h)  
Inner dim.: 700 x 94 x 142 mm (w x d x h)

Ref. no.

18340

### Catheter container



made of s/s, 3 compartments, for hanging on standard profile rail.

Dim.:  
160 x 96 x 560 mm (w x d x h)

Ref. no.

20234

Please also order the standard profile rail, ref. no. 20080 on page 14.

### Arm support



extra sturdy, black. Padded with integral upholstered foam, with 2 attachment devices.

Ref. no.

13923

## Universal holder / Stability corners / Holders for oxygen bottles / Clip-holder / Holder for Kensington lock / Multiple socket outlet

### Universal holder "Snap"

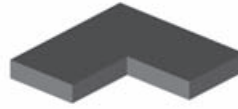


made of white plastic for boxes of disposable gloves, tissues or wipes. Attachment for **toro** included. The spring-loaded clamp is adjustable to fit many box sizes up to about 1 kg; for single handed operation.

**Ref. no.**

15606

### Stability corners



Set of 4 stability corners, made of black cellular rubber, adhesive on one side. For securing the devices when the cart is moved.

Dim.: 40 x 40 x 5 mm (w x d x h)

**Ref. no.**

17222

### Holder



for oxygen bottle à 5/10 ltrs., Ø up to 145 mm. Upper holder and fixing tape included, powder-coated, white-aluminium (RAL 9006). For fastening to the carrier profile.

**Ref. no.**

20236

### Holder



for oxygen bottle of 2 ltrs., upper supporting ring Ø 102 mm, lower supporting ring Ø 84 mm, white-aluminium (RAL 9006). For mounting on the carrier profile.

**Ref. no.**

20060

### Additional upper holder

separately with flexible holding strap.

**Ref. no.**

20237

### Clip-holder



for securing cables, made of grey plastic. Fastening in the profile grooves.

**Ref. no.**

19015

### Holder for Kensington lock



for preventing the theft of notebooks for mounting on the profile. Lock is not included.

**Ref. no.**

16424

### Multiple socket outlet, standard



4 grounding sockets, light-grey cable (3 m long) with moulded grounding plug, green 2-pin switch, quality housing anodised aluminium, 2 grey plastic fastening angles included. Further multiple socket outlets you will find in the separate electrical accessories list.

Dim.: 269 x 44 x 44 mm (w x d x h)

**Ref. no.**

21695

## Electrical accessories

Suitable for the equipment cart systems, we offer you a comprehensive range of electrical accessories in various country-specific versions.

The product range contains:

- Standard multiple socket outlets
- Modular multiple socket outlets
- Central on/off switch
- Isolating transformers
- Equipotential bonding system MultiContact POAG
- Electrical connections according to IEC 320 C13/C14
- Cable management and plug-out protection

On request we send you the separate list with information about the electrical accessories. Please feel free to contact our customer consultants.

All prices are understood exclusive of VAT. As an innovative company we reserve the right to amend prices and designs. As for the rest our General Terms of Business in the valid version apply.

WEEE-Reg.-no. DE 20235235





Chassis



toro  
45  63

Castors Ø125 mm  
Load capacity  
up to 130 kg

Castors Ø150 mm  
Load capacity  
up to 250 kg

Extra charge for 4  
electrically conductive castors

Cable duct horizontal arm



toro  
45  63

Horizontal arm



toro  
45  63

Height of the carrier column



standard

668 mm

1052 mm

1308 mm

1820 mm

variable

0 - 636 mm

700 - 1020 mm

1084 - 1266 mm

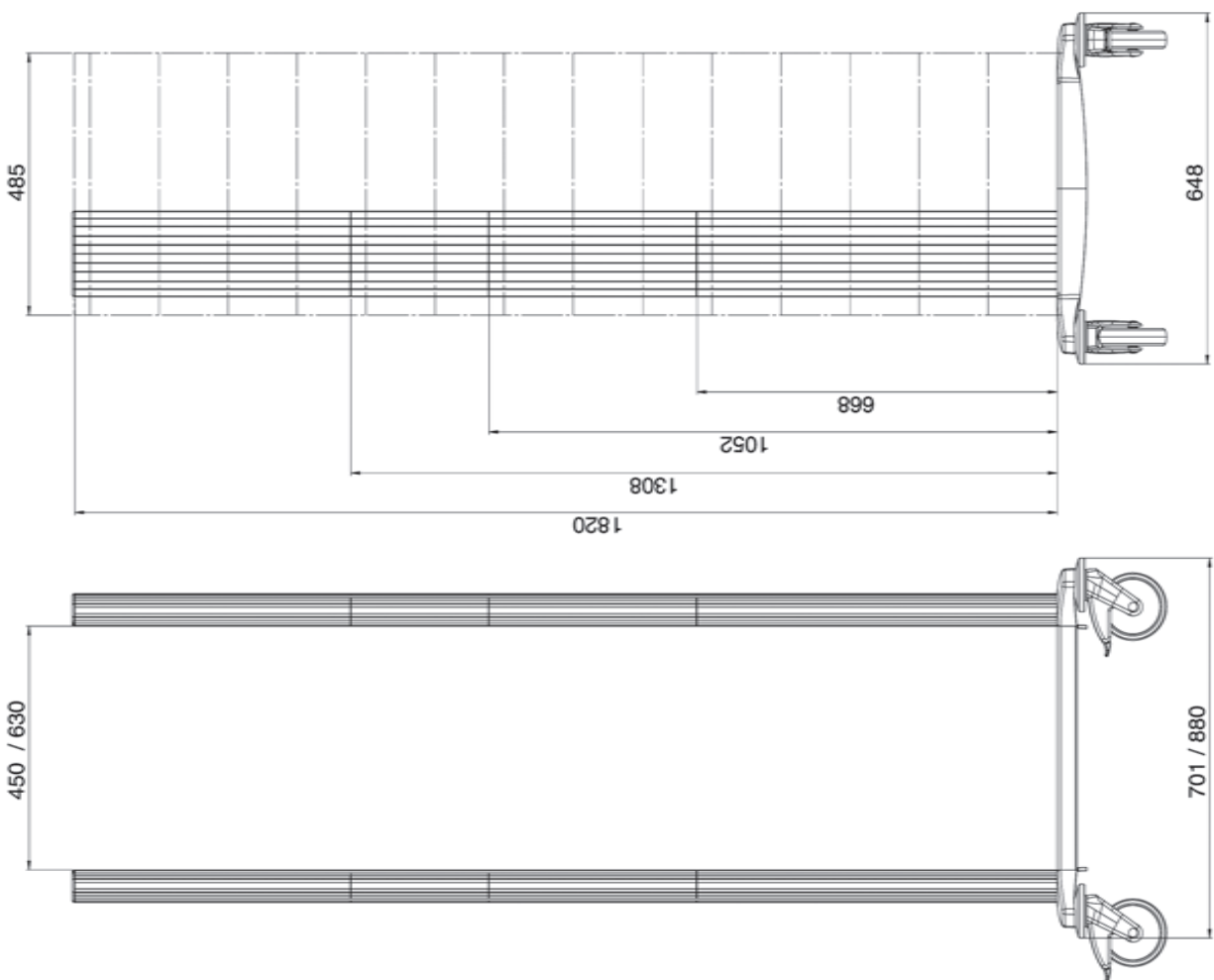
1340 - 1820 mm

(grids = 32 mm)

For optimal stability each toro cart with carrier unit up from 668 mm has to be equipped with one horizontal arm or with a cable duct horizontal arm

Notes:

Blank lines for notes.

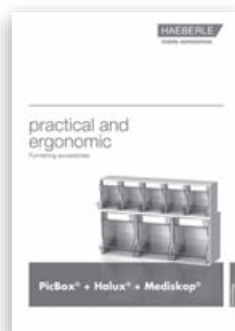




# HAEBERLE

mobile workstations

## Our versatile product range



Your medical distributor



**WAARDENBURG**  
MEDICAL

Dorpsstraat 8a  
4181 BN Waardenburg

www.waardenburgmedical.com  
info@waardenburgmedical.com

+31(0) 418 651 078  
+31(0) 61066 2894

**HAEBERLE GmbH + Co. KG**

Breitwiesenstr. 13, DE-70565 Stuttgart

P.O.Box 800524, DE-70505 Stuttgart

Phone +49 (0) 711/78314-0

Fax +49 (0) 711/78314-77

info@haeberle-med.de

www.haerberle-med.de

Version 07/19