

Series 5

Big Examination Lamp



LED

- + excellent light quality - temperature controlled Osram LED ensures high illumination with excellent colour rendition. Consistent light quality throughout the long life cycle
 - + the specially designed reflector provides a large homogenous light field with minimal glare and superb shadow reduction.
 - + highest energy efficiency points out appr. 70.000 lux
 - + compact, maintenance free central light engine
 - + flexible and easy positioning by means of a spring balanced cardanic arm system and stable mobile base
- ! Production of lamp in accordance to DIN EN 60601, 3rd Edition

Colour of lamp	white
Light source	24 V / 27 W
Light colour	appr. 4.500 K
Light output	appr. 70.000 lux / 1.000 mm
Light field diameter D10	appr. 170 mm at 1.000 mm
Luminous flux	840 lm
Life expectancy	appr. 30.000 h (light source)
Electrical mains	AC 120 – 240 V, 50 – 60 Hz
Total power output	35 W
Colour rendering index	Ra 94
Red-colouring index	R9 > 97
Skin rendering index	R13 > 98
Luminous efficiency	31 lm / W
Intensity steps	50 % / 70 % / 90 %
Electrical rating after	DIN VDE 0750 T1
Handle	sterilisable
Operating mode / Protection class	continuous use / IP20
Safety class	II ¹ / I ²

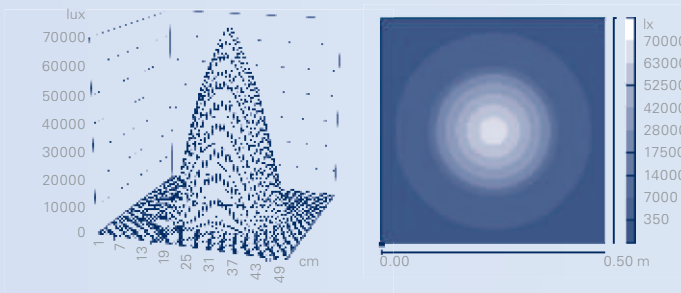
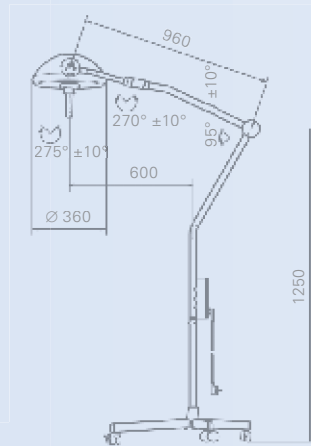
¹ Mobile ² Ceiling and Wall

Mobile Examination Lamp

+ flexible use: at the right time, at the right place

Height adjustment	appr. 1.000 mm
Pivoting radius	appr. 950 mm
Total weight (net weight)	appr. 18,0 kg

L511120A	with dimming key
L511130A	with switch



keypad with dimming key and control lamp

+ the adjustable 4-Step-Dimmer guarantees an excellent visibility



Eco-Version: with switch





Wall Mounted Examination Lamp

+ the suspension system allows accurate and easy positioning thanks to a spring balanced, low friction cardanic arm

Height adjustment appr. 1.000 mm

Pivoting radius appr. 1.750 mm

Total weight (net weight) appr. 19,0 kg

L540066A with dimming key

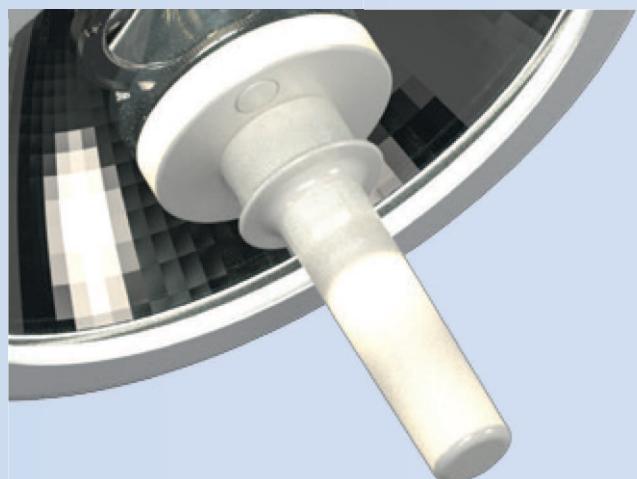
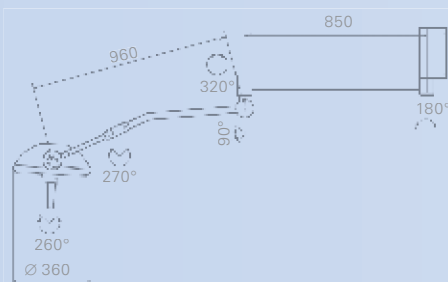
L540076A with switch

▶ light details see page 36

! Instructions for installation please see p. 192



+ easy removable, sterilisable handle



Ceiling Mounted Examination Lamp

+ includes an intelligent management system to monitor LED function and regulates the thermal management system to guarantee maximum life expectancy

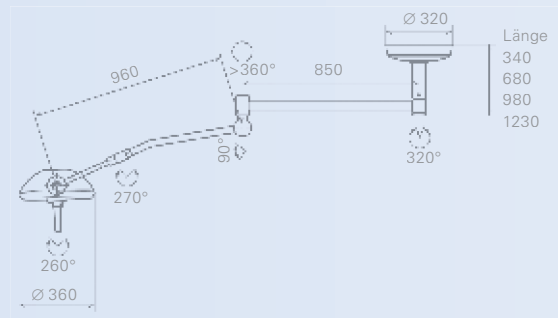
Height adjustment	appr. 1.000 mm
Pivoting radius	appr. 1.750 mm
Total weight (net weight)	appr. 19,0 kg / 21,0 kg / 23,0 kg / 25,0 kg
optional	with ceiling mounting plate / fastening material / cover

with
dimming key with switch

L525067A	L525077A	for room height 2,5 m
L527067A	L527077A	for room height 2,7 m
L530067A	L530077A	for room height 3,0 m
L533067A	L533077A	for room height 3,3 m



▶ light details see page 36



! Cover not included in the delivery

